



US 20060154106A1

(19) **United States**

(12) **Patent Application Publication** (10) **Pub. No.: US 2006/0154106 A1**

Walters et al.

(43) **Pub. Date: Jul. 13, 2006**

(54) **REVERSIBLY REDUCIBLE METAL
COMPLEXES AS ELECTRON
TRANSPORTING MATERIALS FOR OLEDs**

(52) **U.S. Cl.** **428/690**; 428/917; 313/504;
313/506; 257/E51; 546/6; 548/103;
548/106; 556/51

(76) Inventors: **Robert Walters**, Export, PA (US);
Raymond Kwong, Plainsboro, NJ (US);
Mark E. Thompson, Anaheim Hills,
CA (US)

(57) **ABSTRACT**

Correspondence Address:
KENYON & KENYON LLP
ONE BROADWAY
NEW YORK, NY 10004 (US)

The invention is reversibly reducible metal complexes and materials and an organic light emitting device, having an anode; a cathode; and at least one organic layer disposed between the anode and the cathode, made with the complexes of the invention. The reversibly reducible metal complexes are complexes a redox active metal center and at least one ligand; wherein; following a reduction of the complex, adding 1 extra electron to the complex, the extra electron is localized on the metal center. The complexes may function as an ETL or a host material.

(21) Appl. No.: **11/032,941**

(22) Filed: **Jan. 10, 2005**

Publication Classification

(51) **Int. Cl.**
H01L 51/54 (2006.01)
H05B 33/14 (2006.01)

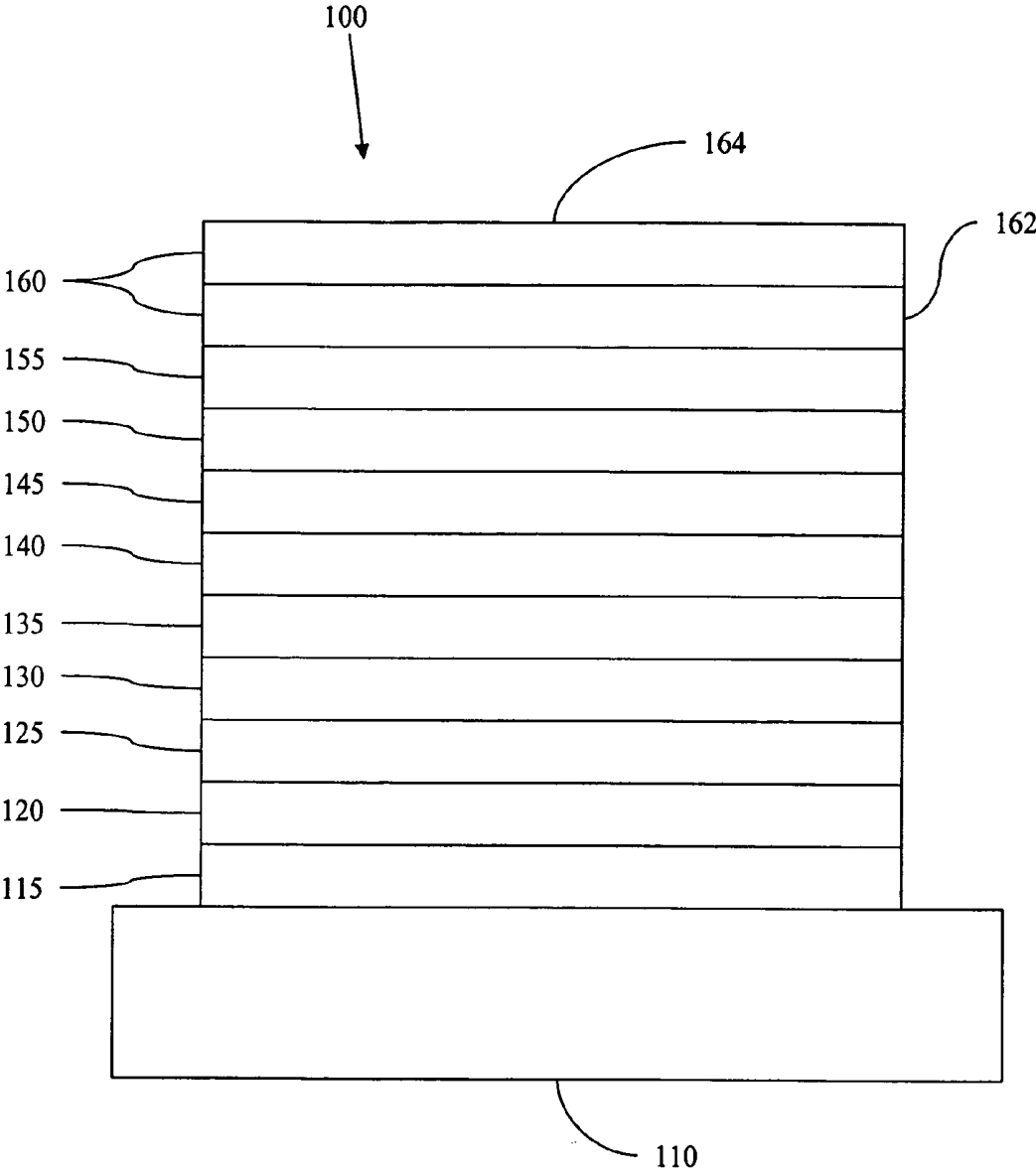


Figure 1

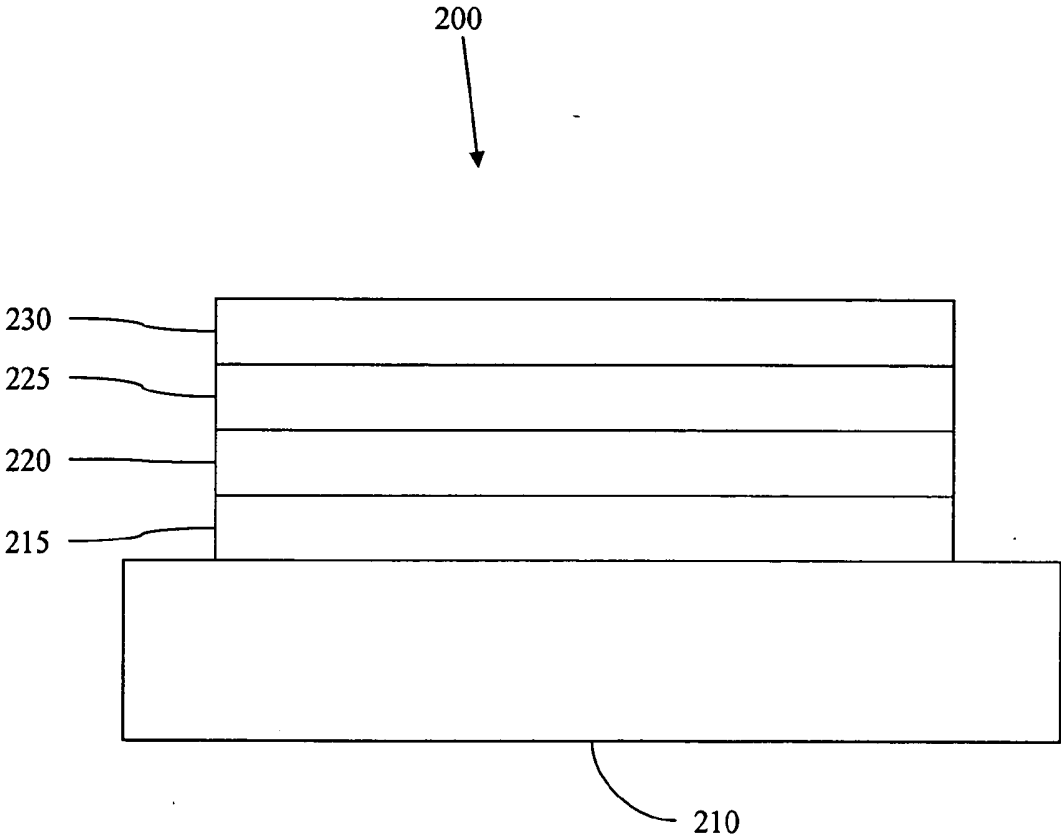


Figure 2

**REVERSIBLY REDUCIBLE METAL COMPLEXES
AS ELECTRON TRANSPORTING MATERIALS
FOR OLEDs**

[0001] This application is related to U.S. application Ser. No. 10/880,384, filed Jun. 28, 2004, entitled Luminescent Compounds with Carbene Ligands, which is incorporated by reference in its entirety.

FIELD OF THE INVENTION

[0002] The present invention relates to organic light emitting devices (OLEDs), and, more specifically, to electron transport and host materials for such devices. In particular, the present invention relates to OLEDs having one or more layers comprising a redox active metal complex, i.e., a reversibly reducible metal complex.

BACKGROUND

[0003] Opto-electronic devices that make use of organic materials are becoming increasingly desirable for a number of reasons. Many of the materials used to make such devices are relatively inexpensive, so organic opto-electronic devices have the potential for cost advantages over inorganic devices. In addition, the inherent properties of organic materials, such as their flexibility, may make them well suited for particular applications such as fabrication on a flexible substrate. Examples of organic opto-electronic devices include organic light emitting devices (OLEDs), organic phototransistors, organic photovoltaic cells, and organic photodetectors. For OLEDs, the organic materials may have performance advantages over conventional materials. For example, the wavelength at which an organic emissive layer emits light may generally be readily tuned with appropriate dopants.

[0004] As used herein, the term "organic" includes polymeric materials as well as small molecule organic materials that may be used to fabricate organic opto-electronic devices. "Small molecule" refers to any organic material that is not a polymer, and "small molecules" may actually be quite large. Small molecules may include repeat units in some circumstances. For example, using a long chain alkyl group as a substituent does not remove a molecule from the "small molecule" class. Small molecules may also be incorporated into polymers, for example as a pendent group on a polymer backbone or as a part of the backbone. Small molecules may also serve as the core moiety of a dendrimer, which consists of a series of chemical shells built on the core moiety. The core moiety of a dendrimer may be a fluorescent or phosphorescent small molecule emitter. A dendrimer may be a "small molecule," and it is believed that all dendrimers currently used in the field of OLEDs are small molecules. In general, a small molecule has a well-defined chemical formula with a single molecular weight, whereas a polymer has a chemical formula and a molecular weight that may vary from molecule to molecule. As used herein, "organic" includes metal complexes of hydrocarbyl and heteroatom-substituted hydrocarbyl ligands.

[0005] OLEDs make use of thin organic films that emit light when voltage is applied across the device. OLEDs are becoming an increasingly interesting technology for use in applications such as flat panel displays, illumination, and backlighting. Several OLED materials and configurations

are described in U.S. Pat. Nos. 5,844,363, 6,303,238, and 5,707,745, which are incorporated herein by reference in their entirety.

[0006] OLED devices are generally (but not always) intended to emit light through at least one of the electrodes, and one or more transparent electrodes may be useful in an organic opto-electronic devices. For example, a transparent electrode material, such as indium tin oxide (ITO), may be used as the bottom electrode. A transparent top electrode, such as disclosed in U.S. Pat. Nos. 5,703,436 and 5,707,745, which are incorporated by reference in their entireties, may also be used. For a device intended to emit light only through the bottom electrode, the top electrode does not need to be transparent, and may comprise a thick and reflective metal layer having a high electrical conductivity. Similarly, for a device intended to emit light only through the top electrode, the bottom electrode may be opaque and/or reflective. Where an electrode does not need to be transparent, using a thicker layer may provide better conductivity, and using a reflective electrode may increase the amount of light emitted through the other electrode, by reflecting light back towards the transparent electrode. Fully transparent devices may also be fabricated, where both electrodes are transparent. Side emitting OLEDs may also be fabricated, and one or both electrodes may be opaque or reflective in such devices.

[0007] As used herein, "top" means furthest away from the substrate, while "bottom" means closest to the substrate. For example, for a device having two electrodes, the bottom electrode is the electrode closest to the substrate, and is generally the first electrode fabricated. The bottom electrode has two surfaces, a bottom surface closest to the substrate, and a top surface further away from the substrate. Where a first layer is described as "disposed over" a second layer, the first layer is disposed further away from substrate. There may be other layers between the first and second layer, unless it is specified that the first layer is "in physical contact with" the second layer. For example, a cathode may be described as "disposed over" an anode, even though there are various organic layers in between.

[0008] As used herein, "solution processible" means capable of being dissolved, dispersed, or transported in and/or deposited from a liquid medium, either in solution or suspension form.

[0009] As used herein, and as would be generally understood by one skilled in the art, a first "Highest Occupied Molecular Orbital" (HOMO) or "Lowest Unoccupied Molecular Orbital" (LUMO) energy level is "greater than" or "higher than" a second HOMO or LUMO energy level if the first energy level is closer to the vacuum energy level. Since ionization potentials (IP) are measured as a negative energy relative to a vacuum level, a higher HOMO energy level corresponds to an IP having a smaller absolute value (an IP that is less negative). Similarly, a higher LUMO energy level corresponds to an electron affinity (EA) having a smaller absolute value (an EA that is less negative). On a conventional energy level diagram, with the vacuum level at the top, the LUMO energy level of a material is higher than the HOMO energy level of the same material. A "higher" HOMO or LUMO energy level appears closer to the top of such a diagram than a "lower" HOMO or LUMO energy level.

[0010] OLEDs typically comprise at least one organic layer, sandwiched between the top and bottom electrodes.

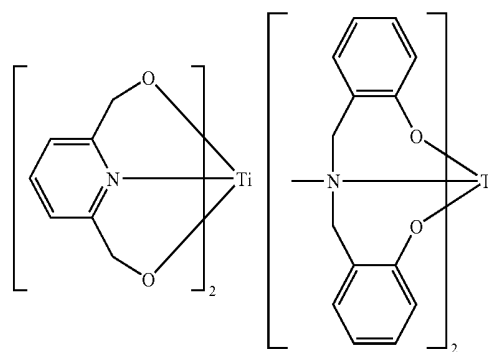
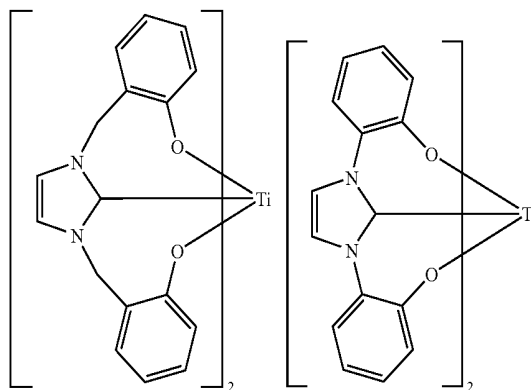
For example, an OLED may comprise an organic electron-transporting layer ("ETL"), an organic emissive layer, and/or an organic hole-transporting ("HTL") or hole-injection layer ("HIL"). Prior art OLEDs typically comprise a metal complex, such as Alq₃ or Balq as an ETL material. Such metal complexes comprise ligands capable of accepting an electron. However, the choice of such compounds is limited.

[0011] Therefore, a new class of ETL materials is desirable. The present invention provides such a new class of ETL materials.

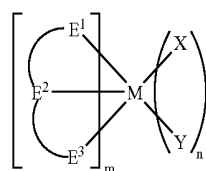
SUMMARY OF THE INVENTION

[0012] The invention is directed to reversibly reducible metal complexes and to ETLs and organic light emitting devices, i.e., OLEDs, incorporating the reversibly reducible metal complex of the invention. OLEDs, incorporating a reversibly reducible metal complex of the invention, comprise an anode; a cathode; and at least one organic layer disposed between the anode and the cathode, where the organic layer comprises a reversibly reducible metal complex of a redox active metal center and at least one ligand, where, in a reduced state, an extra electron is localized on the metal center. The redox active metal complex, i.e., the reversibly reducible metal complex, may function as an ETL and/or as a host for an emissive material. Preferred reducible metal complexes in accordance with the invention are of

[0013] Redox active metal complexes in accordance with the invention include, but are not limited to, reversibly reducible metal complexes of formula:

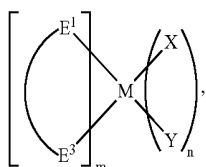


Formula I

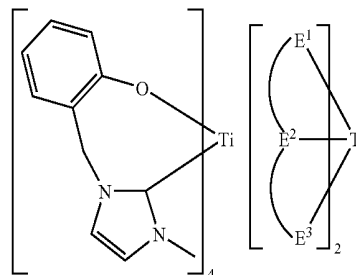
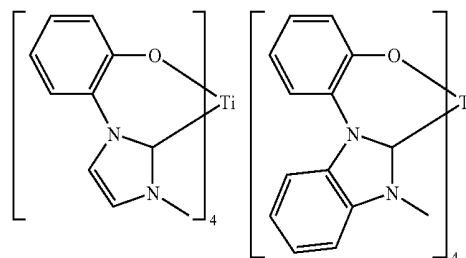
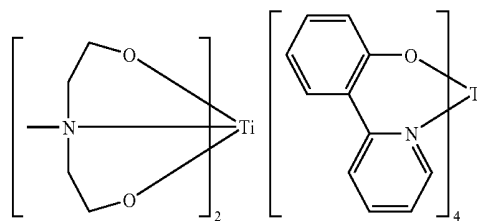


I

and Formula II

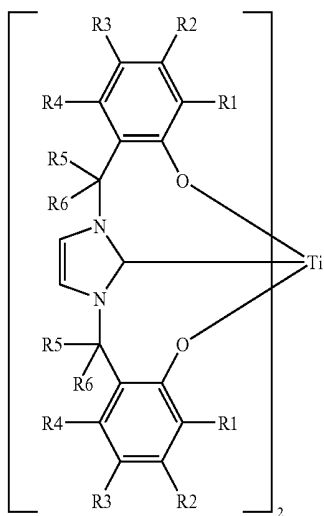


II

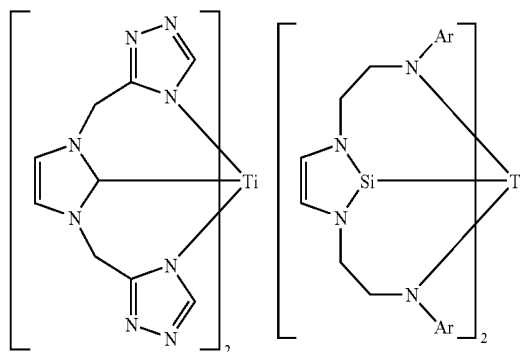
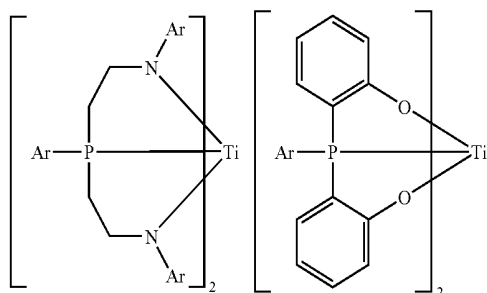
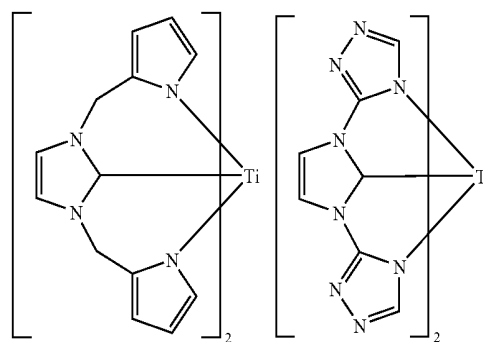
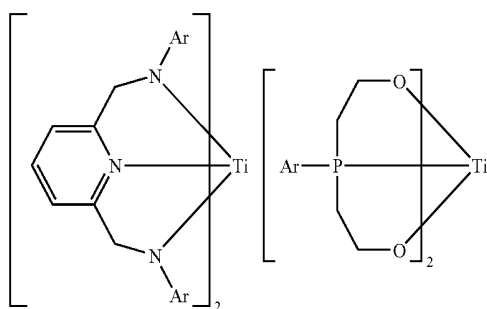
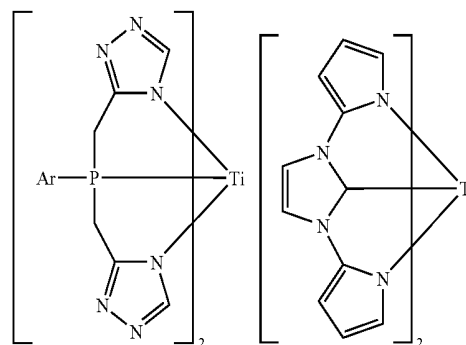
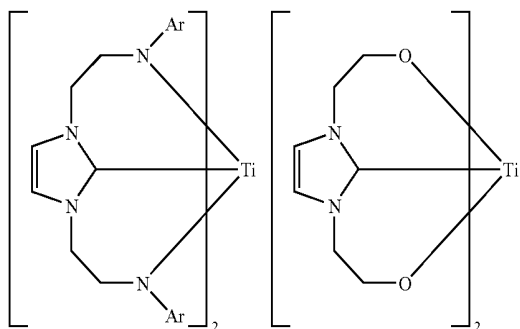
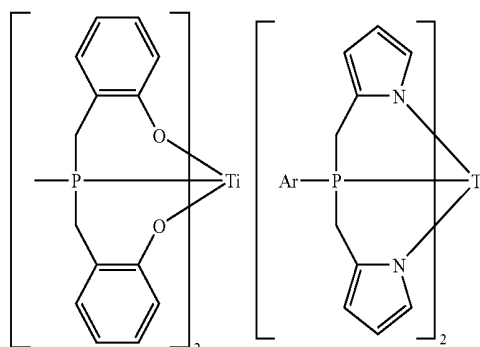


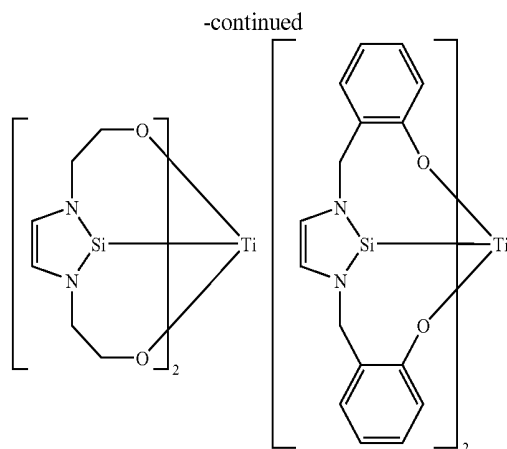
where M is a redox active transition metal, preferably a redox active d0 transition metal; E¹ and E³ are independently selected from nitrogen, oxygen, and sulfur mono-anionic donors; E² is a C, N, P, or Si neutral donor; (X—Y) is selected from a photoactive ligand or an ancillary ligand; m is a value from 1 to the maximum number of ligands that may be attached to metal M; and m+n is the maximum number of ligands that may be attached to metal M, such that the overall complex is neutral.

-continued



-continued





where E^1 and E^3 are either/or nitrogen, oxygen, or sulfur mono anionic donors, and E^2 is a neutral donor, such as C, N, P, Si, etc. In addition, bulky alkyl and aryl substituents may be used to stabilize the complexes, i.e., R1-R6 may be hydrogen or hydrocarbon groups.

BRIEF DESCRIPTION OF THE DRAWINGS

[0014] FIG. 1 shows an organic light emitting device having separate electron transport, hole transport, and emissive layers, as well as other layers.

[0015] FIG. 2 shows an inverted organic light emitting device that does not have a separate electron transport layer.

DETAILED DESCRIPTION

[0016] Generally, an OLED comprises at least one organic layer disposed between and electrically connected to an anode and a cathode. When a current is applied, the anode injects holes and the cathode injects electrons into the organic layer(s). The injected holes and electrons each migrate toward the oppositely charged electrode. When an electron and hole localize on the same molecule, an "exciton," which is a localized electron-hole pair having an excited energy state, is formed. Light is emitted when the exciton relaxes via a photoemissive mechanism. In some cases, the exciton may be localized on an excimer or an exciplex. Non-radiative mechanisms, such as thermal relaxation, may also occur, but are generally considered undesirable.

[0017] The initial OLEDs used emissive molecules that emitted light from their singlet states ("fluorescence"), as disclosed, for example, in U.S. Pat. No. 4,769,292, which is incorporated by reference in its entirety. Fluorescent emission generally occurs in a time frame of less than 10 nanoseconds.

[0018] More recently, OLEDs having emissive materials that emit light from triplet states ("phosphorescence") have been demonstrated. Baldo et al., "Highly Efficient Phosphorescent Emission from Organic Electroluminescent Devices," *Nature*, vol. 395, 151-154, 1998; ("Baldo-I") and Baldo et al., "Very high-efficiency green organic light-emitting devices based on electrophosphorescence," *Appl. Phys. Lett.*, vol. 75, No. 3, 4-6 (1999) ("Baldo-II"), which are incorporated by reference in their entireties. Phospho-

rescence may be referred to as a "forbidden" transition because the transition requires a change in spin states, and quantum mechanics indicates that such a transition is not favored. As a result, phosphorescence generally occurs in a time frame exceeding at least 10 nanoseconds, and typically greater than 100 nanoseconds. If the natural radiative lifetime of phosphorescence is too long, triplets may decay by a non-radiative mechanism, such that no light is emitted. Organic phosphorescence is also often observed in molecules containing heteroatoms with unshared pairs of electrons at very low temperatures. 2,2'-bipyridine is such a molecule. Non-radiative decay mechanisms are typically temperature dependent, such that an organic material that exhibits phosphorescence at liquid nitrogen temperatures typically does not exhibit phosphorescence at room temperature. But, as demonstrated by Baldo, this problem may be addressed by selecting phosphorescent compounds that do phosphoresce at room temperature. Representative emissive layers include doped or un-doped phosphorescent organometallic materials such as disclosed in U.S. Pat. Nos. 6,303,238 and 6,310,360; U.S. Patent Application Publication Nos. 2002-0034656; 2002-0182441; 2003-0072964; and WO-02/074015.

[0019] Generally, the excitons in an OLED are believed to be created in a ratio of about 3:1, i.e., approximately 75% triplets and 25% singlets. See, Adachi et al., "Nearly 100% Internal Phosphorescent Efficiency In An Organic Light Emitting Device," *J. Appl. Phys.*, 90, 5048 (2001), which is incorporated by reference in its entirety. In many cases, singlet excitons may readily transfer their energy to triplet excited states via "intersystem crossing," whereas triplet excitons may not readily transfer their energy to singlet excited states. As a result, 100% internal quantum efficiency is theoretically possible with phosphorescent OLEDs. In a fluorescent device, the energy of triplet excitons is generally lost to radiationless decay processes that heat-up the device, resulting in much lower internal quantum efficiencies. OLEDs utilizing phosphorescent materials that emit from triplet excited states are disclosed, for example, in U.S. Pat. No. 6,303,238, which is incorporated by reference in its entirety.

[0020] Phosphorescence may be preceded by a transition from a triplet excited state to an intermediate non-triplet state from which the emissive decay occurs. For example, organic molecules coordinated to lanthanide elements often phosphoresce from excited states localized on the lanthanide metal. However, such materials do not phosphoresce directly from a triplet excited state but instead emit from an atomic excited state centered on the lanthanide metal ion. The europium diketonate complexes illustrate one group of these types of species.

[0021] Phosphorescence from triplets can be enhanced over fluorescence by confining, preferably through bonding, the organic molecule in close proximity to an atom of high atomic number. This phenomenon, called the heavy atom effect, is created by a mechanism known as spin-orbit coupling. Such a phosphorescent transition may be observed from an excited metal-to-ligand charge transfer (MLCT) state of an organometallic molecule such as tris(2-phenylpyridine)iridium(III).

[0022] As used herein, the term "triplet energy" refers to an energy corresponding to the highest energy feature dis-

cernable in the phosphorescence spectrum of a given material. The highest energy feature is not necessarily the peak having the greatest intensity in the phosphorescence spectrum, and could, for example, be a local maximum of a clear shoulder on the high energy side of such a peak.

[0023] The term “organometallic” as used herein is as generally understood by one of ordinary skill in the art and as given, for example, in “Inorganic Chemistry” (2nd Edition) by Gary L. Miessler and Donald A. Tarr, Prentice Hall (1998). Thus, the term organometallic refers to compounds which have an organic group bonded to a metal through a carbon-metal bond. This class does not include per se coordination compounds, which are substances having only donor bonds from heteroatoms, such as metal complexes of amines, halides, pseudohalides (CN, etc.), and the like. In practice organometallic compounds generally comprise, in addition to one or more carbon-metal bonds to an organic species, one or more donor bonds from a heteroatom. The carbon-metal bond to an organic species refers to a direct bond between a metal and a carbon atom of an organic group, such as phenyl, alkyl, alkenyl, etc., but does not refer to a metal bond to an “inorganic carbon,” such as the carbon of CN or CO.

[0024] FIG. 1 shows an organic light emitting device 100. The figures are not necessarily drawn to scale. Device 100 may include a substrate 110, an anode 115, a hole injection layer 120, a hole transport layer 125, an electron blocking layer 130, an emissive layer 135, a hole blocking layer 140, an electron transport layer 145, an electron injection layer 150, a protective layer 155, and a cathode 160. Cathode 160 is a compound cathode having a first conductive layer 162 and a second conductive layer 164. Device 100 may be fabricated by depositing the layers described, in order.

[0025] Substrate 110 may be any suitable substrate that provides desired structural properties. Substrate 110 may be flexible or rigid. Substrate 110 may be transparent, translucent or opaque. Plastic and glass are examples of preferred rigid substrate materials. Plastic and metal foils are examples of preferred flexible substrate materials. Substrate 110 may be a semiconductor material in order to facilitate the fabrication of circuitry. For example, substrate 110 may be a silicon wafer upon which circuits are fabricated, capable of controlling OLEDs subsequently deposited on the substrate. Other substrates may be used. The material and thickness of substrate 110 may be chosen to obtain desired structural and optical properties.

[0026] Anode 115 may be any suitable anode that is sufficiently conductive to transport holes to the organic layers. The material of anode 115 preferably has a work function higher than about 4 eV (a “high work function material”). Preferred anode materials include conductive metal oxides, such as indium tin oxide (ITO) and indium zinc oxide (IZO), aluminum zinc oxide (AlZnO), and metals. Anode 115 (and substrate 110) may be sufficiently transparent to create a bottom-emitting device. A preferred transparent substrate and anode combination is commercially available ITO (anode) deposited on glass or plastic (substrate). A flexible and transparent substrate-anode combination is disclosed in U.S. Pat. Nos. 5,844,363 and 6,602,540 B2, which are incorporated by reference in their entireties. Anode 115 may be opaque and/or reflective. A reflective anode 115 may be preferred for some top-emitting devices,

to increase the amount of light emitted from the top of the device. The material and thickness of anode 115 may be chosen to obtain desired conductive and optical properties. Where anode 115 is transparent, there may be a range of thickness for a particular material that is thick enough to provide the desired conductivity, yet thin enough to provide the desired degree of transparency. Other anode materials and structures may be used.

[0027] Hole transport layer 125 may include a material capable of transporting holes. Hole transport layer 130 may be intrinsic (undoped), or doped. Doping may be used to enhance conductivity. α -NPD and TPD are examples of intrinsic hole transport layers. An example of a p-doped hole transport layer is m-MTDATA doped with F₄-TCNQ at a molar ratio of 50:1, as disclosed in United States Patent Application Publication No. 2003-0230980 to Forrest et al., which is incorporated by reference in its entirety. Other hole transport layers may be used.

[0028] Emissive layer 135 may include an organic material capable of emitting light when a current is passed between anode 115 and cathode 160. Preferably, emissive layer 135 contains a phosphorescent emissive material, although fluorescent emissive materials may also be used. Phosphorescent materials are preferred because of the higher luminescent efficiencies associated with such materials. Emissive layer 135 may also comprise a host material capable of transporting electrons and/or holes, doped with an emissive material that may trap electrons, holes, and/or excitons, such that excitons relax from the emissive material via a photoemissive mechanism. Emissive layer 135 may comprise a single material that combines transport and emissive properties. Whether the emissive material is a dopant or a major constituent, emissive layer 135 may comprise other materials, such as dopants that tune the emission of the emissive material. Emissive layer 135 may include a plurality of emissive materials capable of, in combination, emitting a desired spectrum of light. Examples of phosphorescent emissive materials include Ir(ppy)₃. Examples of fluorescent emissive materials include DCM and DMQA. Examples of host materials include reducible complexes of redox active metals and ligands, as discussed below, as well as Alq₃, CBP and mCP. Examples of emissive and host materials are disclosed in U.S. Pat. No. 6,303,238 to Thompson et al., which is incorporated by reference in its entirety. An emissive material may be included in emissive layer 135 in a number of ways. For example, an emissive small molecule may be incorporated into a polymer. This may be accomplished by several ways: by doping the small molecule into the polymer either as a separate and distinct molecular species; or by incorporating the small molecule into the backbone of the polymer, so as to form a copolymer; or by bonding the small molecule as a pendant group on the polymer. Other emissive layer materials and structures may be used. For example, a small molecule emissive material may be present as the core of a dendrimer.

[0029] Many useful emissive materials include one or more ligands bound to a metal center. A ligand may be referred to as “photoactive” if it contributes directly to the photoactive properties of an organometallic emissive material. A “photoactive” ligand may provide, in conjunction with a metal, the energy levels from which and to which an electron moves when a photon is emitted. Other ligands may be referred to as “ancillary.” Ancillary ligands may modify

the photoactive properties of the molecule, for example by shifting the energy levels of a photoactive ligand, but ancillary ligands do not directly provide the energy levels involved in light emission. A ligand that is photoactive in one molecule may be ancillary in another. These definitions of photoactive and ancillary are intended as non-limiting theories.

[0030] Electron transport layer **145** may include a material capable of transporting electrons. Electron transport layer **145** may be intrinsic (undoped), or doped. Doping may be used to enhance conductivity. Alq₃ is an example of an intrinsic electron transport layer. An example of an n-doped electron transport layer is BPhen doped with Li at a molar ratio of 1:1, as disclosed in United States Patent Application Publication No. 2003-0230980 to Forrest et al., which is incorporated by reference in its entirety. Other electron transport layers known in the art may be used. Preferably, ETL **145** comprises a reversibly reducible complex of a redox active metal and at least one ligand, as discussed below, as either the electron transport material or as a host with at least one dopant.

[0031] The charge carrying component of the electron transport layer may be selected such that electrons can be efficiently injected from the cathode into the LUMO (Lowest Unoccupied Molecular Orbital) energy level of the electron transport layer. The "charge carrying component" is the material responsible for the LUMO energy level that actually transports electrons. This component may be the base material, or it may be a dopant. The LUMO energy level of an organic material may be generally characterized by the electron affinity of that material and the relative electron injection efficiency of a cathode may be generally characterized in terms of the work function of the cathode material. This means that the preferred properties of an electron transport layer and the adjacent cathode may be specified in terms of the electron affinity of the charge carrying component of the ETL and the work function of the cathode material. In particular, so as to achieve high electron injection efficiency, the work function of the cathode material is preferably not greater than the electron affinity of the charge carrying component of the electron transport layer by more than about 0.75 eV, more preferably, by not more than about 0.5 eV. Similar considerations apply to any layer into which electrons are being injected.

[0032] Cathode **160** may be any suitable material or combination of materials known to the art, such that cathode **160** is capable of conducting electrons and injecting them into the organic layers of device **100**. Cathode **160** may be transparent or opaque, and may be reflective. Metals and metal oxides are examples of suitable cathode materials. Cathode **160** may be a single layer, or may have a compound structure. FIG. 1 shows a compound cathode **160** having a thin metal layer **162** and a thicker conductive metal oxide layer **164**. In a compound cathode, preferred materials for the thicker layer **164** include ITO, IZO, and other materials known to the art. U.S. Pat. Nos. 5,703,436, 5,707,745, 6,548,956 B2, and 6,576,134 B2, which are incorporated by reference in their entireties, disclose examples of cathodes including compound cathodes having a thin layer of metal such as Mg:Ag with an overlying transparent, electrically-conductive, sputter-deposited ITO layer. The part of cathode **160** that is in contact with the underlying organic layer, whether it is a single layer cathode **160**, the thin metal layer

162 of a compound cathode, or some other part, is preferably made of a material having a work function lower than about 4 eV (a "low work function material"). Other cathode materials and structures may be used.

[0033] Blocking layers may be used to reduce the number of charge carriers (electrons or holes) and/or excitons that leave the emissive layer. An electron blocking layer **130** may be disposed between emissive layer **135** and the hole transport layer **125**, to block electrons from leaving emissive layer **135** in the direction of hole transport layer **125**. Similarly, a hole blocking layer **140** may be disposed between emissive layer **135** and electron transport layer **145**, to block holes from leaving emissive layer **135** in the direction of electron transport layer **145**. Blocking layers may also be used to block excitons from diffusing out of the emissive layer. The theory and use of blocking layers is described in more detail in U.S. Pat. No. 6,097,147 and United States Patent Application Publication No. 2003-0230980 to Forrest et al., which are incorporated by reference in their entireties.

[0034] As used herein, as would be understood by one skilled in the art, the term "blocking layer" means that the layer provides a barrier that significantly inhibits transport of charge carriers and/or excitons through the device, without suggesting that the layer necessarily completely blocks the charge carriers and/or excitons. The presence of such a blocking layer in a device may result in substantially higher efficiencies as compared to a similar device lacking a blocking layer. Also, a blocking layer may be used to confine emission to a desired region of an OLED.

[0035] Generally, injection layers comprise a material that may improve the injection of charge carriers from one layer, such as an electrode or an organic layer, into an adjacent organic layer. Injection layers may also perform a charge transport function. In device **100**, hole injection layer **120** may be any layer that improves the injection of holes from anode **115** into hole transport layer **125**. CuPc is an example of a material that may be used as a hole injection layer from an ITO anode **115**, and other anodes. In device **100**, electron injection layer **150** may be any layer that improves the injection of electrons into electron transport layer **145**. LiF/Al is an example of a material that may be used as an electron injection layer into an electron transport layer from an adjacent layer. Other materials or combinations of materials may be used for injection layers. Depending upon the configuration of a particular device, injection layers may be disposed at locations different than those shown in device **100**. More examples of injection layers are provided in U.S. patent application Ser. No. 09/931,948 to Lu et al., which is incorporated by reference in its entirety. A hole injection layer may comprise a solution deposited material, such as a spin-coated polymer, e.g., PEDOT:PSS, or it may be a vapor deposited small molecule material, e.g., CuPc or MTDATA.

[0036] A hole injection layer (HIL) may planarize or wet the anode surface so as to provide efficient hole injection from the anode into the hole injecting material. A hole injection layer may also have a charge carrying component having HOMO (Highest Occupied Molecular Orbital) energy levels that favorably match up, as defined by their herein-described relative ionization potential (IP) energies, with the adjacent anode layer on one side of the HIL and the hole transporting layer on the opposite side of the HIL. The

“charge carrying component” is the material responsible for the HOMO energy level that actually transports holes. This component may be the base material of the HIL, or it may be a dopant. Using a doped HIL allows the dopant to be selected for its electrical properties, and the host to be selected for morphological properties such as wetting, flexibility, toughness, etc. Preferred properties for the HIL material are such that holes can be efficiently injected from the anode into the HIL material. In particular, the charge carrying component of the HIL preferably has an IP not more than about 0.7 eV greater than the IP of the anode material. More preferably, the charge carrying component has an IP not more than about 0.5 eV greater than the anode material. Similar considerations apply to any layer into which holes are being injected. HIL materials are further distinguished from conventional hole transporting materials that are typically used in the hole transporting layer of an OLED in that such HIL materials may have a hole conductivity that is substantially less than the hole conductivity of conventional hole transporting materials. The thickness of the HIL of the present invention may be thick enough to help planarize or wet the surface of the anode layer. For example, an HIL thickness of as little as 10 nm may be acceptable for a very smooth anode surface. However, since anode surfaces tend to be very rough, a thickness for the HIL of up to 50 nm may be desired in some cases.

[0037] A protective layer may be used to protect underlying layers during subsequent fabrication processes. For example, the processes used to fabricate metal or metal oxide top electrodes may damage organic layers, and a protective layer may be used to reduce or eliminate such damage. In device **100**, protective layer **155** may reduce damage to underlying organic layers during the fabrication of cathode **160**. Preferably, a protective layer has a high carrier mobility for the type of carrier that it transports (electrons in device **100**), such that it does not significantly increase the operating voltage of device **100**. CuPc, BCP, and various metal phthalocyanines are examples of materials that may be used in protective layers. Other materials or combinations of materials may be used. The thickness of protective layer **155** is preferably thick enough that there is little or no damage to underlying layers due to fabrication processes that occur after organic protective layer **160** is deposited, yet not so thick as to significantly increase the operating voltage of device **100**. Protective layer **155** may be doped to increase its conductivity. For example, a CuPc or BCP protective layer **160** may be doped with Li. A more detailed description of protective layers may be found in U.S. patent application Ser. No. 09/931,948 to Lu et al., which is incorporated by reference in its entirety.

[0038] **FIG. 2** shows an inverted OLED **200**. The device includes a substrate **210**, an cathode **215**, an emissive layer **220**, a hole transport layer **225**, and an anode **230**. Device **200** may be fabricated by depositing the layers described, in order. Because the most common OLED configuration has a cathode disposed over the anode, and device **200** has cathode **215** disposed under anode **230**, device **200** may be referred to as an “inverted” OLED. Materials similar to those described with respect to device **100** may be used in the corresponding layers of device **200**. **FIG. 2** provides one example of how some layers may be omitted from the structure of device **100**.

[0039] The simple layered structure illustrated in **FIGS. 1 and 2** is provided by way of non-limiting example, and it is understood that embodiments of the invention may be used in connection with a wide variety of other structures. The specific materials and structures described are exemplary in nature, and other materials and structures may be used. Functional OLEDs may be achieved by combining the various layers described in different ways, or layers may be omitted entirely, based on design, performance, and cost factors. Other layers not specifically described may also be included. Materials other than those specifically described may be used. Although many of the examples provided herein describe various layers as comprising a single material, it is understood that combinations of materials, such as a mixture of host and dopant, or more generally a mixture, may be used. Also, the layers may have various sublayers. The names given to the various layers herein are not intended to be strictly limiting. For example, in device **200**, hole transport layer **225** transports holes and injects holes into emissive layer **220**, and may be described as a hole transport layer or a hole injection layer. In one embodiment, an OLED may be described as having an “organic layer” disposed between a cathode and an anode. This organic layer may comprise a single layer, or may further comprise multiple layers of different organic materials as described, for example, with respect to **FIGS. 1 and 2**.

[0040] Structures and materials not specifically described may also be used, such as OLEDs comprising polymeric materials (PLEDs), such as disclosed in U.S. Pat. No. 5,247,190, Friend et al., which is incorporated by reference in its entirety. By way of further example, OLEDs having a single organic layer may be used. OLEDs may be stacked, for example as described in U.S. Pat. No. 5,707,745 to Forrest et al, which is incorporated by reference in its entirety. The OLED structure may deviate from the simple layered structure illustrated in **FIGS. 1 and 2**. For example, the substrate may include an angled reflective surface to improve out-coupling, such as a mesa structure as described in U.S. Pat. No. 6,091,195 to Forrest et al., and/or a pit structure as described in U.S. Pat. No. 5,834,893 to Bulovic et al., which are incorporated by reference in their entireties.

[0041] Unless otherwise specified, any of the layers of the various embodiments may be deposited by any suitable method. For the organic layers, preferred methods include thermal evaporation, ink-jet, such as described in U.S. Pat. Nos. 6,013,982 and 6,087,196, which are incorporated by reference in their entireties, organic vapor phase deposition (OVPD), such as described in U.S. Pat. No. 6,337,102 to Forrest et al., which is incorporated by reference in its entirety, and deposition by organic vapor jet printing (OVJP), such as described in U.S. patent application Ser. No. 10/233,470, which is incorporated by reference in its entirety. Other suitable deposition methods include spin coating and other solution based processes. Solution based processes are preferably carried out in nitrogen or an inert atmosphere. For the other layers, preferred methods include thermal evaporation. Preferred patterning methods include deposition through a mask, cold welding such as described in U.S. Pat. Nos. 6,294,398 and 6,468,819, which are incorporated by reference in their entireties, and patterning associated with some of the deposition methods such as ink-jet and OVJD. Other methods may also be used. The materials to be deposited may be modified to make them compatible with a particular deposition method. For

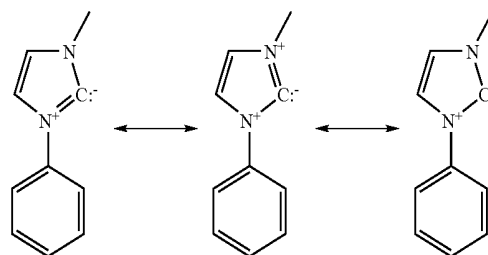
example, substituents such as alkyl and aryl groups, branched or unbranched, and preferably containing at least 3 carbons, may be used in small molecules to enhance their ability to undergo solution processing. Substituents having 20 carbons or more may be used, and 3-20 carbons is a preferred range. Materials with asymmetric structures may have better solution processibility than those having symmetric structures, because asymmetric materials may have a lower tendency to recrystallize. Dendrimer substituents may be used to enhance the ability of small molecules to undergo solution processing.

[0042] The molecules disclosed herein may be substituted in a number of different ways without departing from the scope of the invention. For example, substituents may be added to a compound having three bidentate ligands, such that after the substituents are added, one or more of the bidentate ligands are linked together to form, for example, a tetradentate or hexadentate ligand. Other such linkages may be formed. It is believed that this type of linking may increase stability relative to a similar compound without linking, due to what is generally understood in the art as a "chelating effect."

[0043] Devices fabricated in accordance with embodiments of the invention may be incorporated into a wide variety of consumer products, including flat panel displays, computer monitors, televisions, billboards, lights for interior or exterior illumination and/or signaling, heads up displays, fully transparent displays, flexible displays, laser printers, telephones, cell phones, personal digital assistants (PDAs), laptop computers, digital cameras, camcorders, viewfinders, micro-displays, vehicles, a large area wall, theater or stadium screen, or a sign. Various control mechanisms may be used to control devices fabricated in accordance with the present invention, including passive matrix and active matrix. Many of the devices are intended for use in a temperature range comfortable to humans, such as 18 degrees C. to 30 degrees C., and more preferably at room temperature (20-25 degrees C.).

[0044] The materials and structures described herein may have applications in devices other than OLEDs. For example, other optoelectronic devices such as organic solar cells and organic photodetectors may employ the materials and structures. More generally, organic devices, such as organic transistors, may employ the materials and structures.

[0045] As used herein, the term "carbene" refers to compounds having a divalent carbon atom with only six electrons in its valence shell when not coordinated to a metal. A useful exercise to determine whether a ligand includes a carbene-metal bond is to mentally deconstruct the complex as a metal fragment and a ligand, and to then determine whether a carbon atom in the ligand that was previously bound to the metal is a neutral divalent carbon atom in the deconstructed state. The resonance forms of a preferred embodiment may be shown as:



This definition of carbene is not limited to metal-carbene complexes synthesized from carbenes, but is rather intended to address the orbital structure and electron distribution associated with the carbon atom that is bound to the metal. The definition recognizes that the "carbene" may not technically be divalent when bound to the metal, but it would be divalent if it were detached from the metal. Although many such compounds are synthesized by first synthesizing a carbene and then binding it to a metal, the definition is intended to encompass compounds synthesized by other methods that have a similar orbital structure and electron configuration. Lowry & Richardson, *Mechanism and Theory in Organic Chemistry* 256 (Harper & Row, 1976) defines "carbene" in a way that is consistent with the way the term is used herein. Some references may define "carbene" as a carbon ligand that forms a double bond to a metal. While this definition is not being used in the present application, there may be some overlap between the two definitions. A variety of representations are used to depict the bonding in such carbenes, including those in which a curved line is used to indicate partial multiple bonding between the carbene carbon and the adjacent heteroatom(s).

[0046] As used herein, the term "redox active metal" refers to a metal in a complex, i.e., a metal ion surrounded by ligands, that can undergo reduction or oxidation. For the metal to be "redox active," oxidation and reduction of the complex occur principally at the metal center, and not on the ligands complexed to the metal. As a result, the oxidation state of the metal changes upon reduction or oxidation of the complex, such that the electronic density on the ligands remains substantially unchanged, and the ligands, typically, do not dissociate from the complex.

[0047] As used herein, the term "redox active reducible metal complex" refers to a metal complex, as described above, where the metal is capable of oxidation and reduction in an electrochemical process. For example, for a metal complex of formula TiX_4 , where X is anionic ligand, the Ti is in the 4+oxidation state, i.e., $Ti(IV)$ or Ti^{4+} . Upon reduction, an electron is added to the complex, and the complex takes a negative charge, i.e., TiX_4^- , and the Ti is reduced to its 3+oxidation state, i.e., $Ti(III)$ or Ti^{3+} . As discussed above, the electron added in the reduction process is primarily located on the Ti center of the reduced complex.

[0048] As used herein, the term "readily switch redox state" refers to a metal complex in a first redox state that can readily switch to a second, accessible redox state at a moderate potential. As will be understood by those of skill

in the art, the redox state of a complex is a function of the number of electrons in the complex, which changes when the complex is reduced or oxidized. For a neutral complex, oxidation or reduction in a series of single steps, adding (reduction) or removing (oxidation) electrons, takes the complex through a series of redox states. When a neutral complex is reduced, the complex gains a negative charge, which increases with each successive reduction. Oxidation of a reduced complex reverses the process. If the voltage required to remove or add electrons to a complex is moderate, the redox state can be switched readily. If the energy required to shift between redox states is high, the state will not be switched readily. In addition, a high kinetic barrier may exist for a change in redox state. As a result, the voltage required for the change in state must be accessible in the matrix or solvent containing the complex, and the kinetic barrier to the redox reaction must be a small for the complex to readily switch redox state. In addition, the kinetic barriers to electron transfer can be minimized by a careful selection of a metal that has a low reorganization barrier to electron transfer. The kinetic barriers for reduction of metal complexes are best described by Marcus electron transfer theory.

[0049] As used herein, the term “resting state” refers to the neutral state of a vacuum deposited device. More generally, the resting state is the redox state of a complex before any charge is injected. For solution processed OLEDs, where the complex is initially in the form of a cation, the cation is the resting state, and the neutral form of the complex carries the electron.

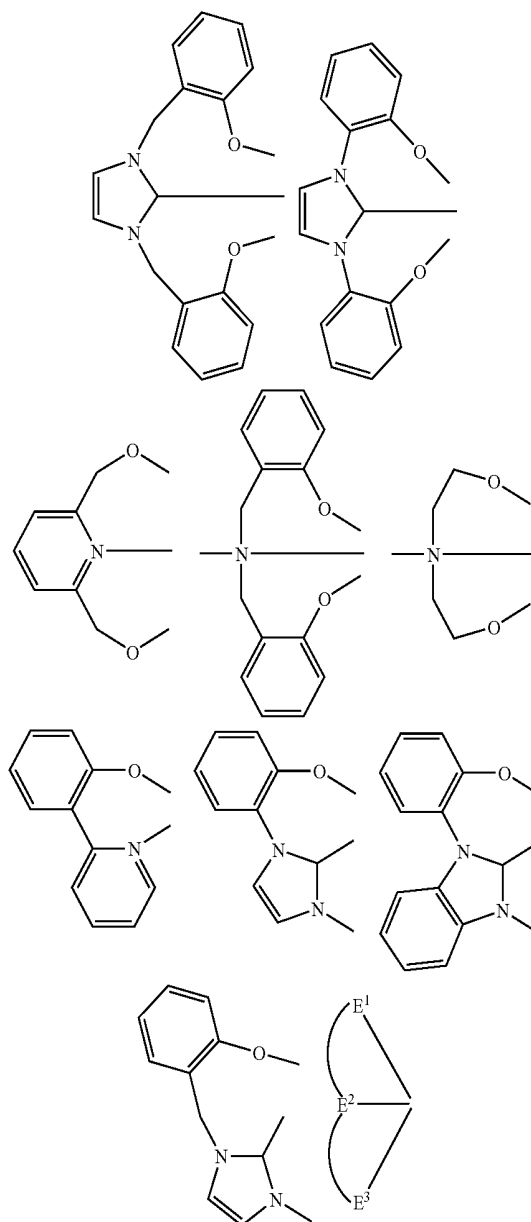
[0050] Preferably, an OLED in accordance with the invention has at least one organic layer comprising a reversibly reducible metal complex with a redox active metal. This complex may be used in the device at least as an ETL or as a host material. The preferred reversibly reducible metal complexes readily undergo a reversible change of oxidation state, and, thus, may be referred to as reversibly reducible metal complexes. That is, for example, for a reversibly reducible metal complex comprising Ti(IV) as the metal, the Ti(IV) may be reduced to Ti(III) in the complex without the dissociation of a ligand, and then oxidized to Ti(IV). This process allows for the transport of electrons through the material.

[0051] A preferred OLED of the invention comprises an anode; a cathode; and at least one organic layer disposed between the anode and the cathode. The organic layer comprises a reversibly reducible metal complex of a redox active metal center and at least one ligand, where, following a reduction of the complex that adds one extra electron to the complex, the extra electron is predominantly localized on the metal center of the reduced complex. That is, as will be recognized by those skilled in the art, substantially all of the charge of the electron will be on the metal, rather than on the ligands. The location of the electron in such a reduced complex may be determined with X-Ray Absorption Fine Structure (“XAFS”) techniques, but is best determined through theoretical calculations, such as density function theory calculation (DFT), or Electron Paramagnetic Resonance (“EPR”).

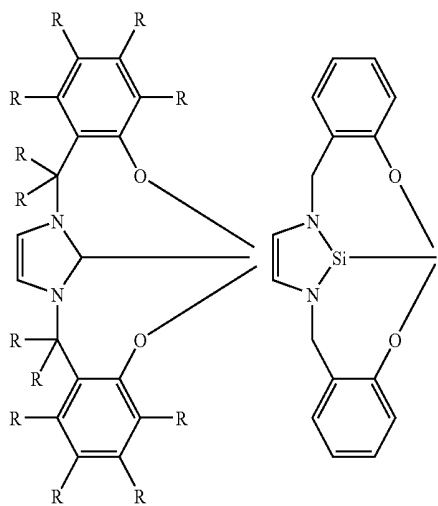
[0052] Preferably, the metal is a d(0) metal, such as Ti(IV). By using a d(0) metal with ligands having an inherently high π^* energy level, the extra electron of the reduced species is localized on the metal center. The localization of the electron

on the metal of a reduced metal complex prevents bond formation between two reduced complexes. It may also improve the stability of the complex, as the electron charge is not distributed on the ligands, where irreversible bond breakage could lead to decomposition. As discussed above, in all prior art electron transport materials, the electron added during reduction is predominantly in a ligand based orbital.

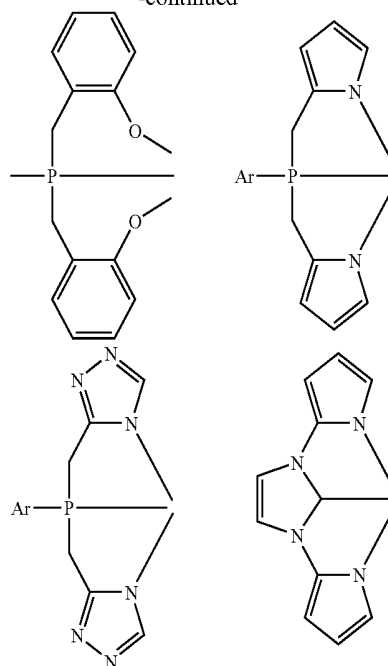
[0053] Useful ligands preferably contain two electron donors, such as carbenes, that form a coordinatively saturated metal center, and do not dissociate from the metal center upon reduction of the complex. Carbenes are particularly preferred, as carbenes are less likely to dissociate from the metal complex upon reduction of the complex, due to the strength of the carbene-metal bond. Particularly useful ligands include, but are not limited to:



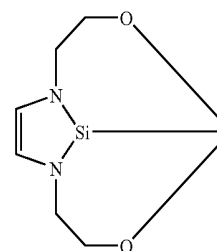
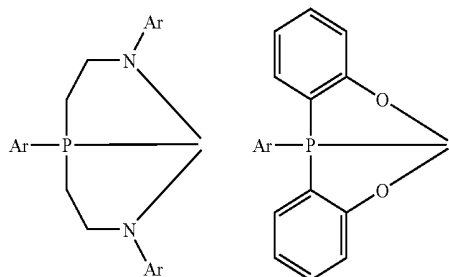
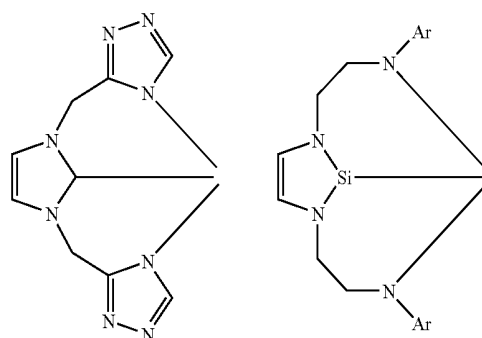
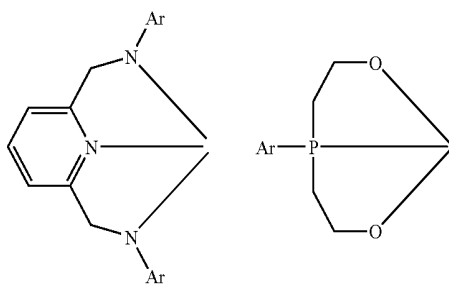
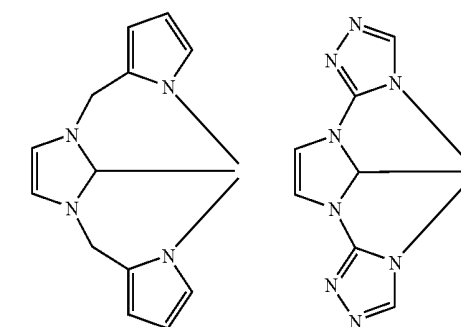
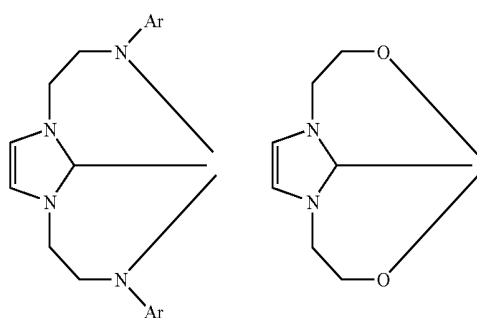
-continued



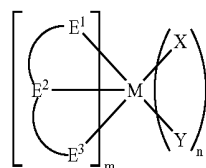
-continued



where E^1 and E^3 are either/or nitrogen, oxygen, or sulfur mono anionic donors, E^2 is a C, N, P, Si, etc neutral donor,

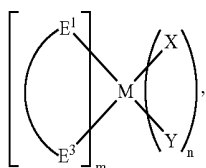


[0054] The reversibly reducible metal complexes useful in the invention are neutral and substantially colorless in the resting state, preferably having an extinction coefficient at wavelengths from about 400 nm to about 750 nm in the resting state of no more than about $1000 \text{ M}^{-1}\cdot\text{cm}^{-1}$, and, more preferably, no more than about $100 \text{ M}^{-1}\cdot\text{cm}^{-1}$. Preferred reducible metal complexes in accordance with the invention are of Formula I



I

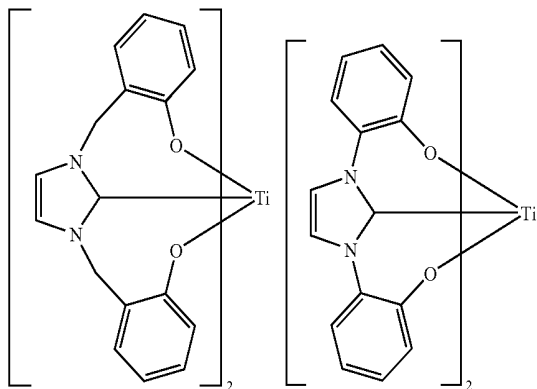
and Formula II



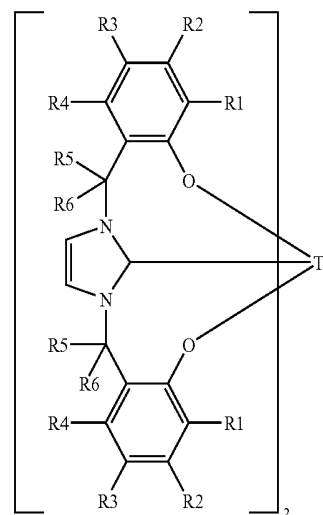
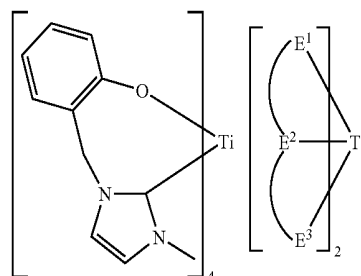
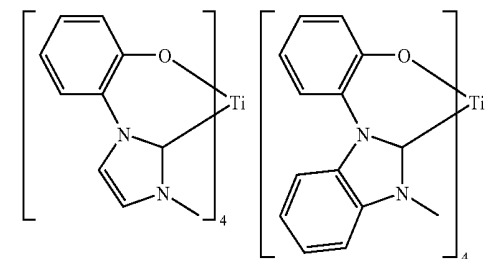
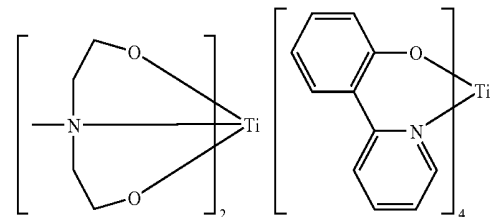
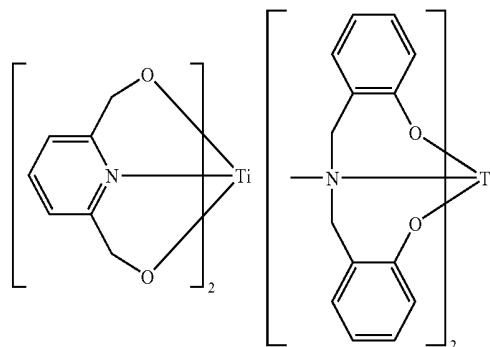
II

where M is a redox active transition metal, preferably a redox active d0 transition metal; E¹ and E³ are independently selected from nitrogen, oxygen, and sulfur mono-anionic donors; E² is a C, N, P, or Si neutral donor; (X—Y) is selected from a photoactive ligand or an ancillary ligand; m is a value from 1 to the maximum number of ligands that may be attached to metal M; and m+n is the maximum number of ligands that may be attached to metal M, such that the overall complex is neutral.

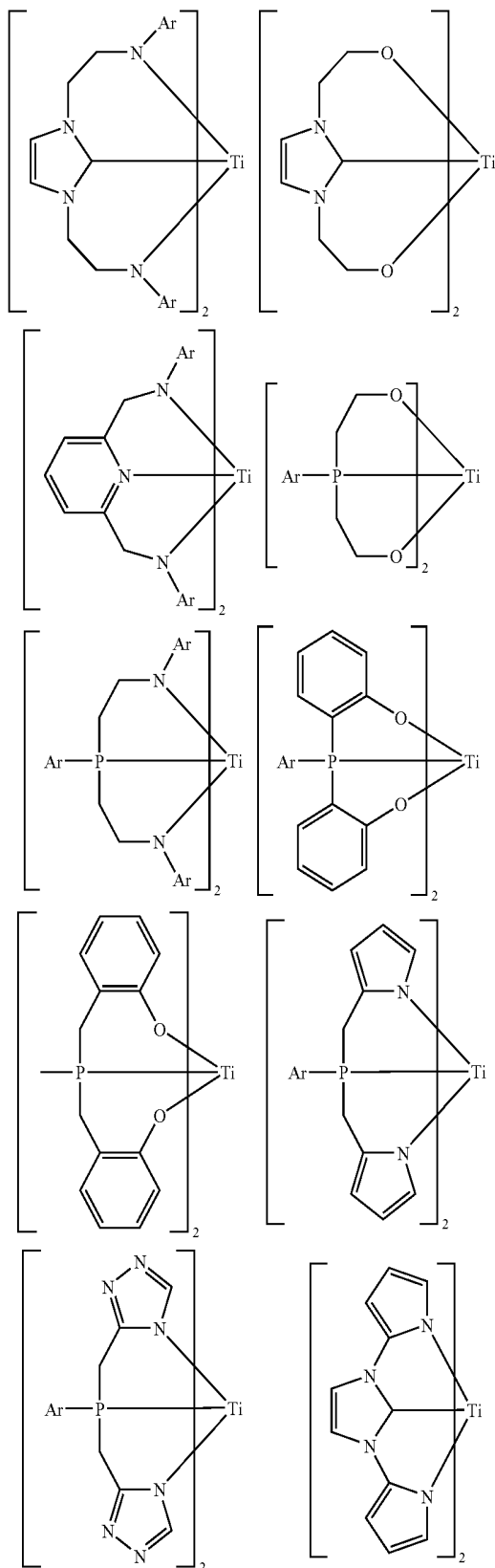
[0055] Particularly useful reversibly reducible metal complexes include, but are not limited to complexes of formula:



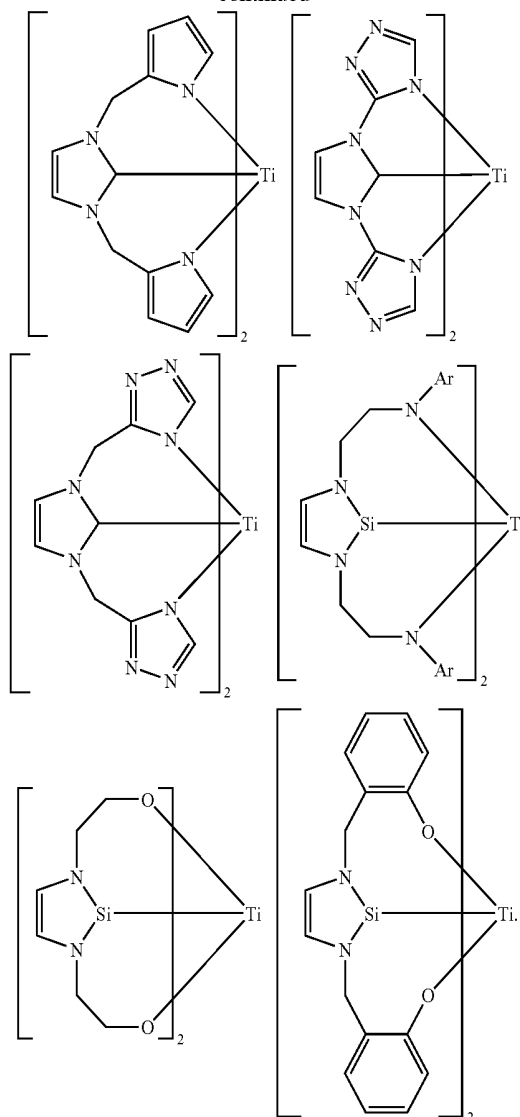
-continued



where E¹ and E³ are either/or nitrogen, oxygen, or sulfur mono anionic donors, and E² is a C, N, P, Si, or similar neutral donor,



-continued



[0056] It is understood that the various embodiments described herein are by way of example only, and are not intended to limit the scope of the invention. For example, many of the materials and structures described herein may be substituted with other materials and structures without deviating from the spirit of the invention. It is understood that various theories as to why the invention works are not intended to be limiting. For example, theories relating to charge transfer are not intended to be limiting.

[0057] The term “halo” or “halogen” as used herein includes fluorine, chlorine, bromine and iodine.

[0058] The term “alkyl” as used herein contemplates both straight and branched chain alkyl radicals. Preferred alkyl groups are those containing from one to fifteen carbon atoms and includes methyl, ethyl, propyl, isopropyl, butyl, isobutyl, tert-butyl, and the like. Additionally, the alkyl group may be optionally substituted with one or more substituents selected from halo, CN, CO₂R, C(O)R, NR₂, cyclic-amino, NO₂, and OR, wherein each R is independently selected from H, alkyl, alkenyl, alkynyl, aralkyl, aryl and heteroaryl.

[0059] The term “cycloalkyl” as used herein contemplates cyclic alkyl radicals. Preferred cycloalkyl groups are those containing 3 to 7 carbon atoms and includes cyclopropyl, cyclopentyl, cyclohexyl, and the like. Additionally, the cycloalkyl group may be optionally substituted with one or more substituents selected from halo, CN, CO₂R, C(O)R, NR₂, cyclic-amino, NO₂, and OR.

[0060] The term “alkenyl” as used herein contemplates both straight and branched chain alkene radicals. Preferred alkenyl groups are those containing two to fifteen carbon atoms. Additionally, the alkenyl group may be optionally substituted with one or more substituents selected from halo, CN, CO₂R, C(O)R, NR₂, cyclic-amino, NO₂, and OR.

[0061] The term “alkynyl” as used herein contemplates both straight and branched chain alkyne radicals. Preferred alkyl groups are those containing two to fifteen carbon atoms. Additionally, the alkynyl group may be optionally substituted with one or more substituents selected from halo, CN, CO₂R, C(O)R, NR₂, cyclic-amino, NO₂, and OR.

[0062] The terms “aralkyl” as used herein contemplates an alkyl group that has as a substituent an aromatic group. Additionally, the aralkyl group may be optionally substituted on the aryl with one or more substituents selected from halo, CN, CO₂R, C(O)R, NR₂, cyclic-amino, NO₂, and OR.

[0063] The term “heterocyclic group” as used herein contemplates non-aromatic cyclic radicals. Preferred heterocyclic groups are those containing 3 or 7 ring atoms which includes at least one hetero atom, and includes cyclic amines such as morpholino, piperidino, pyrrolidino, and the like, and cyclic ethers, such as tetrahydrofuran, tetrahydropyran, and the like. Additionally, the heterocyclic group may be optionally substituted with one or more substituents selected from halo, CN, CO₂R, C(O)R, NR₂, cyclic-amino, NO₂, and OR.

[0064] The term “aryl” or “aromatic group” as used herein contemplates single-ring groups and polycyclic ring systems. The polycyclic rings may have two or more rings in which two carbons are common by two adjoining rings (the rings are “fused”) wherein at least one of the rings is aromatic, e.g., the other rings can be cycloalkyls, cycloalkenyls, aryl, heterocycles and/or heteroaryls. Additionally, the aryl group may be optionally substituted with one or more substituents selected from halo, CN, CO₂R, C(O)R, NR₂, cyclic-amino, NO₂, and OR.

[0065] The term “heteroaryl” as used herein contemplates single-ring hetero-aromatic groups that may include from one to three heteroatoms, for example, pyrrole, furan, thiophene, imidazole, oxazole, thiazole, triazole, pyrazole, pyridine, pyrazine and pyrimidine, and the like. The term heteroaryl also includes polycyclic hetero-aromatic systems having two or more rings in which two atoms are common to two adjoining rings (the rings are “fused”) wherein at least one of the rings is a heteroaryl, e.g., the other rings can be cycloalkyls, cycloalkenyls, aryl, heterocycles and/or heteroaryls. Additionally, the heteroaryl group may be optionally substituted with one or more substituents selected from halo, CN, CO₂R, C(O)R, NR₂, cyclic-amino, NO₂, and OR.

Material Definitions:

[0066] As used herein, abbreviations refer to materials as follows:

[0067] CBP: 4,4'-N,N-dicarbazole-biphenyl

[0068] m-MTDATA: 4,4'-tris(3-methylphenylphenylamino)triphenylamine

[0069] Alq₃: 8-tris-hydroxyquinoline aluminum

[0070] Bphen: 4,7-diphenyl-1,10-phenanthroline

[0071] n-BPhen: n-doped BPhen (doped with lithium)

[0072] F₄-TCNQ: tetrafluoro-tetracyano-quinodimethane

[0073] p-MTDATA: p-doped m-MTDATA (doped with F₄-TCNQ)

[0074] Ir(ppy)₃: tris(2-phenylpyridine)-iridium

[0075] Ir(ppz)₃: tris(1-phenylpyrazolo, N, C(2')iridium(III)

[0076] BCP: 2,9-dimethyl-4,7-diphenyl-1,10-phenanthroline

[0077] TAZ: 3-phenyl-4-(1'-naphthyl)-5-phenyl-1,2,4-triazole

[0078] CuPc: copper phthalocyanine.

[0079] ITO: indium tin oxide

[0080] NPD: N,N'-diphenyl-N—N'-di(1-naphthyl)-benzidine

[0081] TPD: N,N'-diphenyl-N—N'-di(3-tolyl)-benzidine

[0082] BA1q: aluminum(III)bis(2-methyl-8-hydroxyquinolinato)-4-phenylphenolate

[0083] mCP: 1,3-N,N-dicarbazole-benzene

[0084] DCM: 4-(dicyanoethylene)-6-(4-dimethylaminostyryl-2-methyl)-4H-pyran

[0085] DMQA: N,N'-dimethylquinacridone

[0086] PEDOT:PSS: an aqueous dispersion of poly(3,4-ethylenedioxythiophene) with polystyrenesulfonate (PSS)

[0087] HPT: 2,3,6,7,10,11-hexaphenyltriphenylene

[0088] While the present invention is described with respect to particular examples and preferred embodiments, it is understood that the present invention is not limited to these examples and embodiments. The present invention as claimed therefore includes variations from the particular examples and preferred embodiments described herein, as will be apparent to one of skill in the art.

What is claimed:

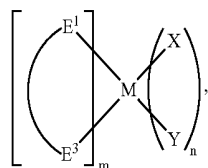
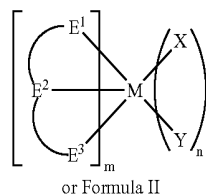
1. An organic light emitting device, comprising:

an anode; a cathode; and at least one organic layer disposed between the anode and the cathode;

the organic layer comprising a reversibly reducible metal complex of a redox active metal center and at least one ligand; wherein;

in a reduced state, an extra electron is localized on the metal center.

2. The device according to claim 1, wherein the metal complex is of Formula I



wherein M is a redox active transition metal, E¹ and E³ are independently selected from nitrogen, oxygen, and sulfur mono-anionic donors; E² is a C, N, P, or Si neutral donor; (X—Y) is selected from a photoactive ligand or an ancillary ligand; m is a value from 1 to the maximum number of ligands that may be attached to metal M; and m+n is the maximum number of ligands that may be attached to metal M, such that the overall complex is neutral.

3. The device according to claim 1, wherein the metal is a d(0) metal.

4. The device according to claim 1, wherein the metal is Ti(IV).

5. The device according to claim 1, wherein the organic layer is an electron transporting layer.

6. The device according to claim 1, wherein the reversibly reducible metal complex is a host material.

7. The device according to claim 1, wherein at least one ligand of the complex is a carbene.

8. The device according to claim 1, wherein, in the reduced state, the ligand remains complexed to the metal.

9. The device according to claim 1, wherein the reversibly reducible metal complex is neutral in the resting state.

10. The device according to claim 1, wherein the reversibly reducible metal complex is substantially colorless in the resting state.

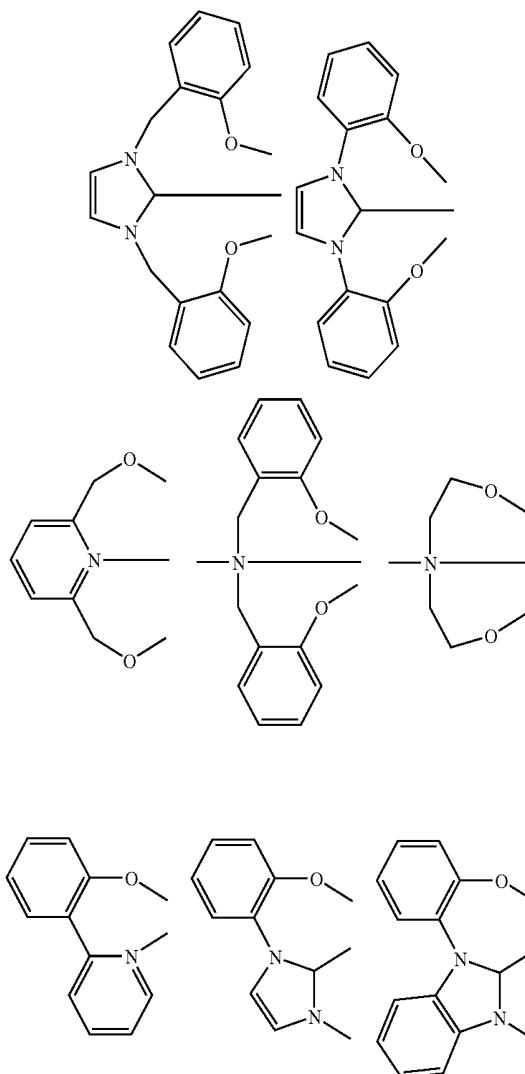
11. The device according to claim 1, wherein the reversibly reducible metal complex has an extinction coefficient of

no more than about 1000 M⁻¹·cm⁻¹ at wavelengths from about 400 nm to about 750 nm in the resting state.

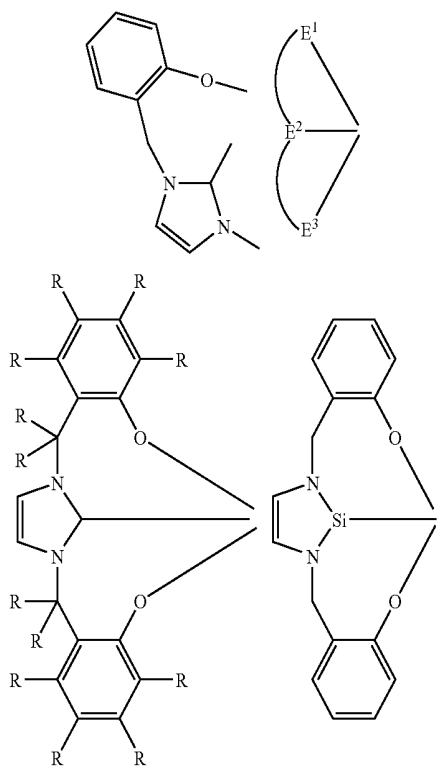
12. The device according to claim 1, wherein a ligand is selected from the group consisting of

I

II

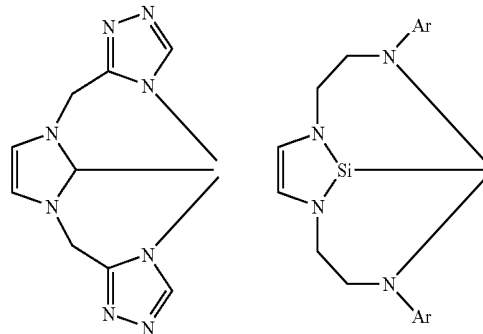
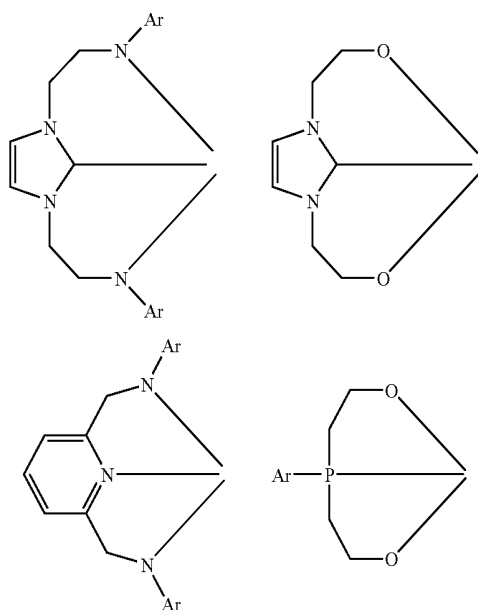
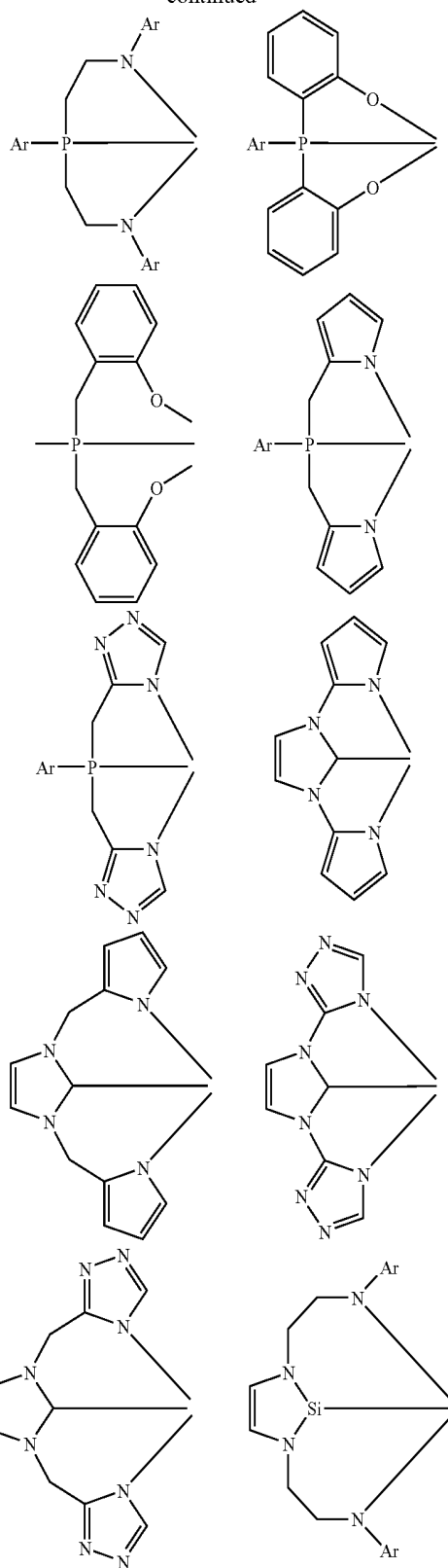


-continued

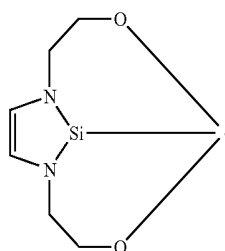


where E^1 and E^3 are either/or nitrogen, oxygen, or sulfur mono anionic donors, and E^2 is a C, N, P, or Si neutral donor,

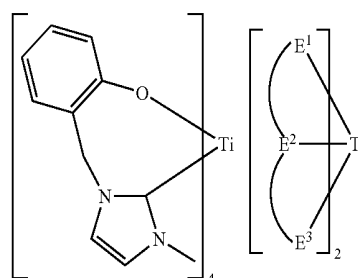
-continued



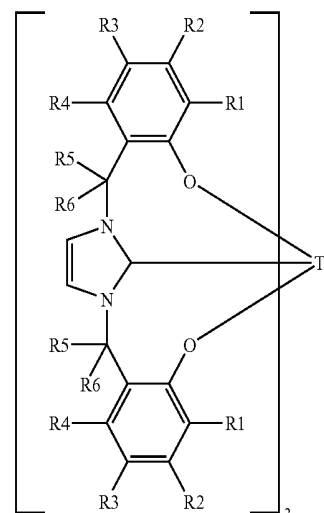
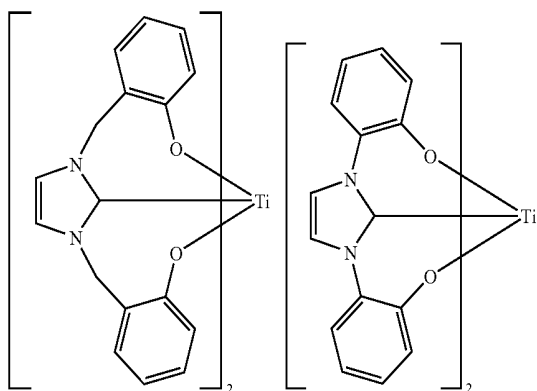
-continued



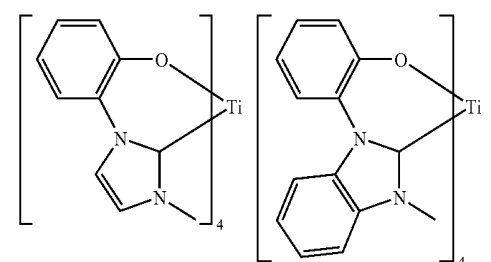
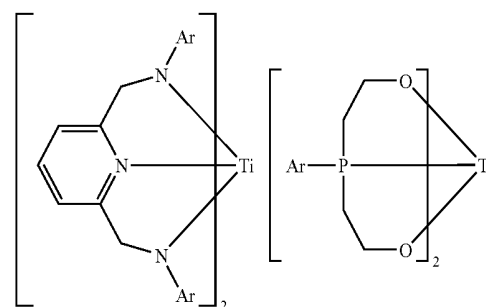
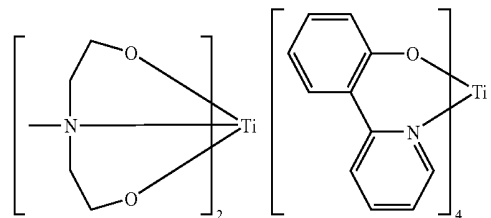
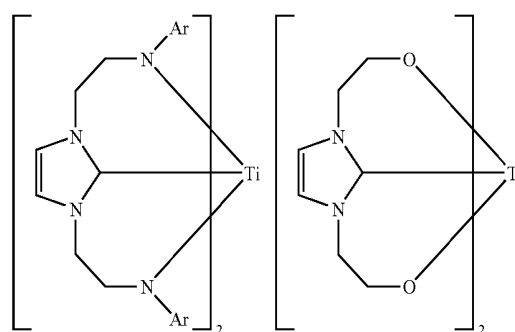
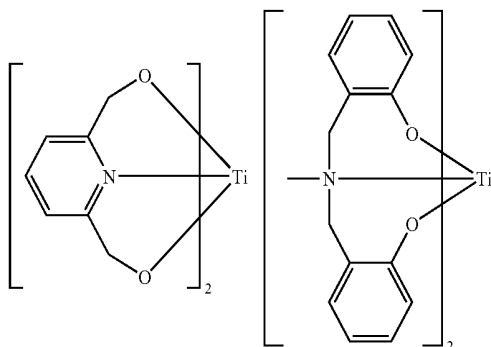
-continued



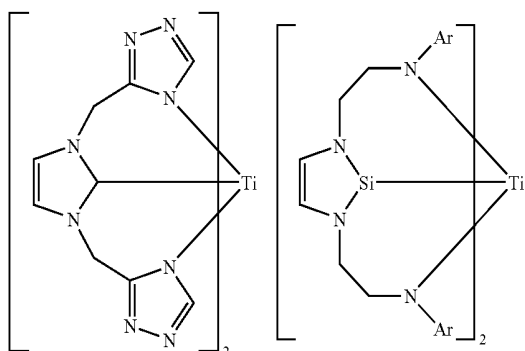
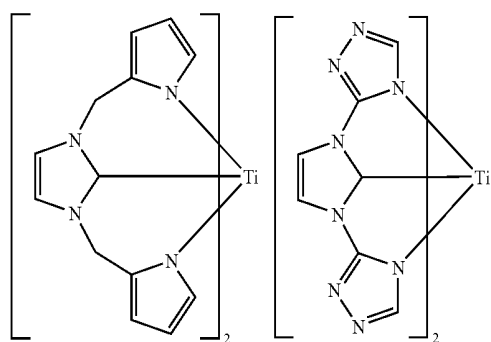
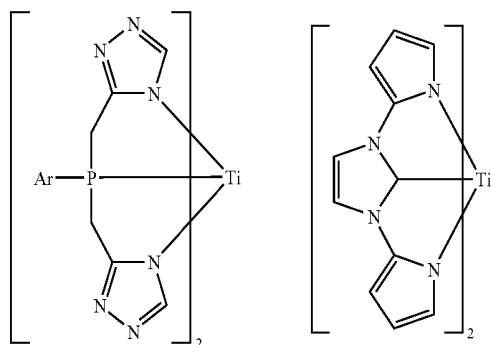
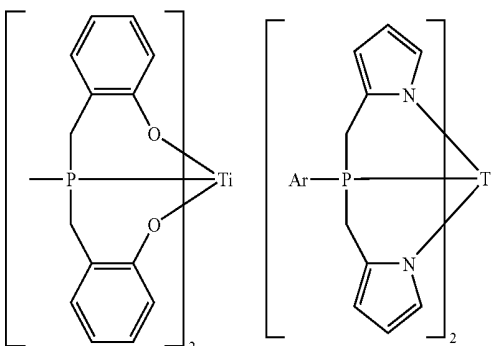
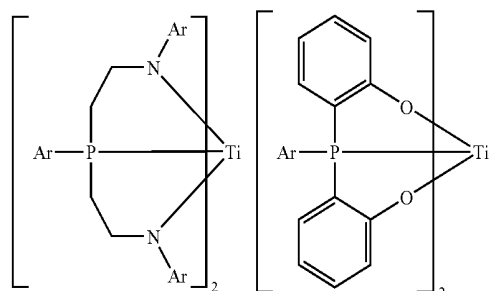
13. The device according to claim 1, wherein the reversibly reducible metal complex is selected from the group consisting of:



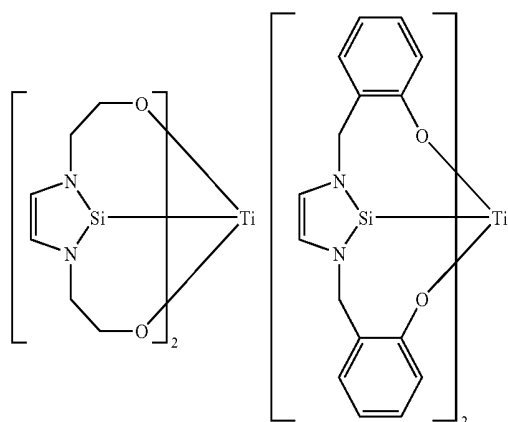
where E¹ and E³ are either/or nitrogen, oxygen, or sulfur mono anionic donors, and E is a C, N, P, or Si neutral donor,



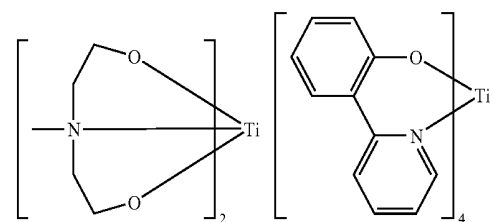
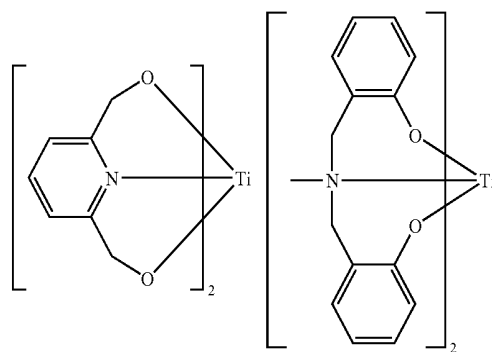
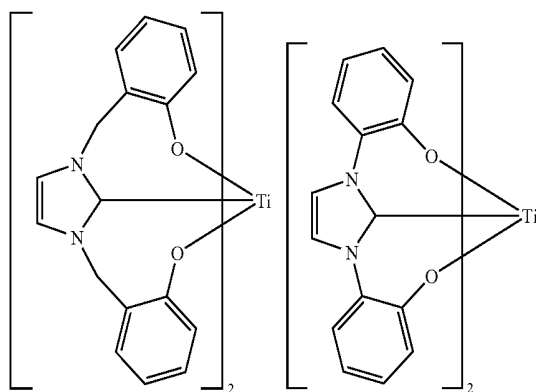
-continued



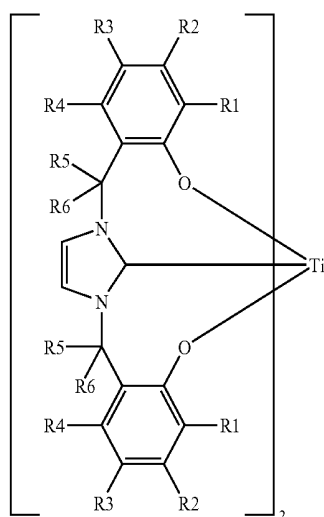
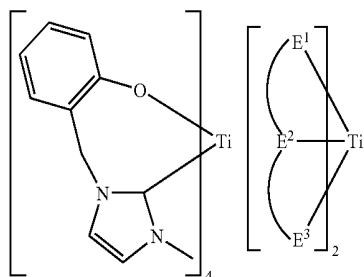
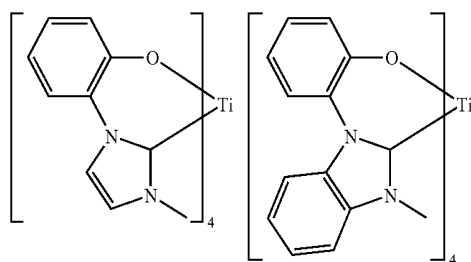
-continued



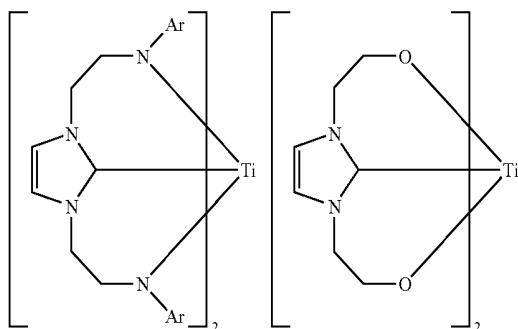
14. A reversibly reducible metal complex, selected from the group consisting of complexes of formula:



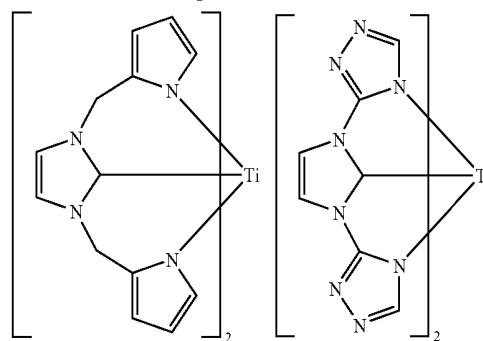
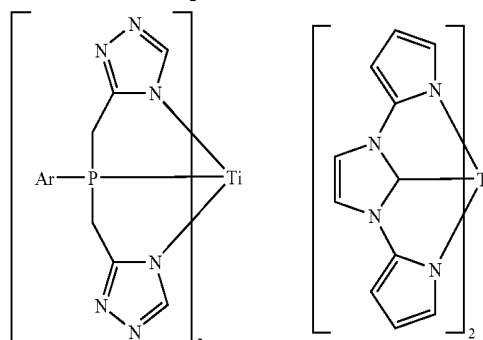
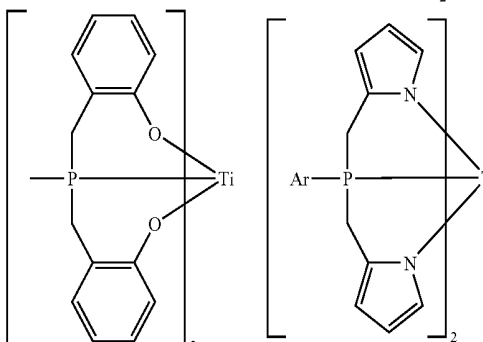
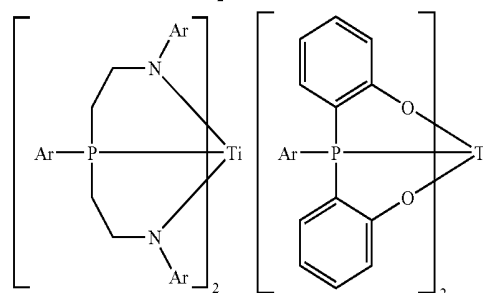
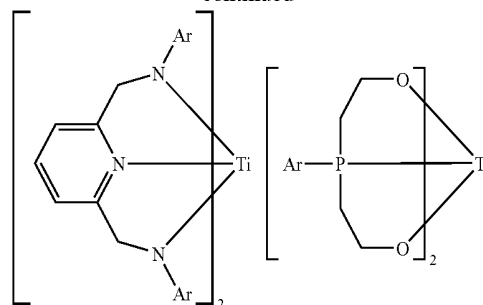
-continued

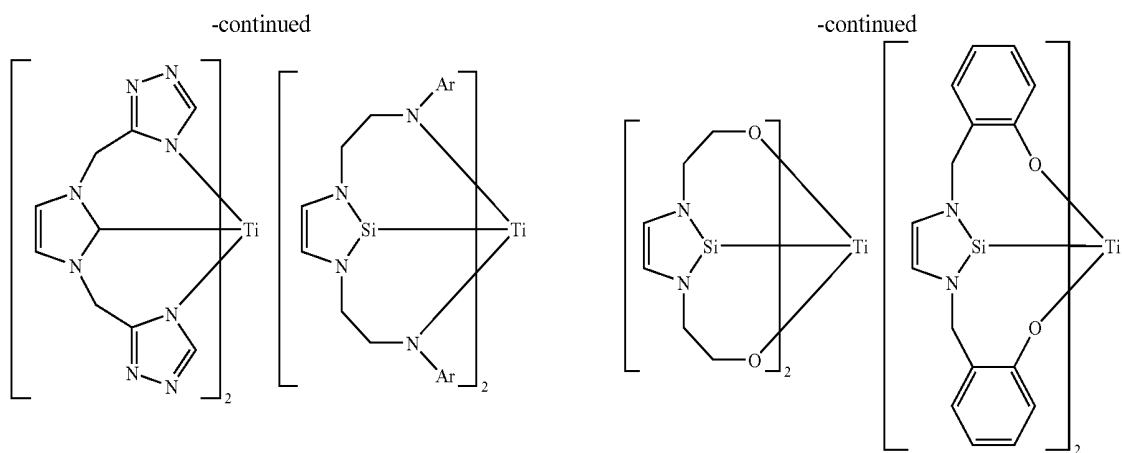


Where E^1 and E^3 are either/or nitrogen, oxygen, or sulfur mono anionic donors, E^2 is a C, N, P, Si, etc neutral donor,



-continued





15. A host or electron transporting material, comprising the reversibly reducible metal complex according to claim 13.

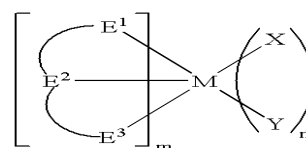
* * * * *

专利名称(译)	可逆还原的金属配合物作为OLED的电子传输材料		
公开(公告)号	US20060154106A1	公开(公告)日	2006-07-13
申请号	US11/032941	申请日	2005-01-10
[标]申请(专利权)人(译)	WALTERS ROBERT RAYMOND THOMPSON 标志 e		
申请(专利权)人(译)	WALTERS ROBERT RAYMOND THOMPSON 标志 e		
当前申请(专利权)人(译)	WALTERS ROBERT RAYMOND THOMPSON 标志 e		
[标]发明人	WALTERS ROBERT KWONG RAYMOND THOMPSON MARK E		
发明人	WALTERS, ROBERT KWONG, RAYMOND THOMPSON, MARK E.		
IPC分类号	H01L51/54 H05B33/14		
CPC分类号	H01L51/0077 H01L51/0084 H01L51/5048 Y10S428/917		
其他公开文献	US7582365		
外部链接	Espacenet USPTO		

摘要(译)

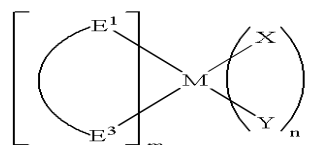
本发明是可逆还原的金属配合物和材料以及具有阳极的有机发光器件;阴极;和至少一个设置在阳极和阴极之间的有机层,由本发明的配合物制成。可逆还原的金属配合物是氧化还原活性金属中心和至少一种配体的配合物;其中,在复合物还原后,向复合物中加入1个额外的电子,额外的电子位于金属中心。复合物可以作为ETL或宿主材料起作用。

Formula I



I

and Formula II



II